



Masonic
Charitable Foundation



NOTTINGHAMSHIRE 2029 FESTIVAL APPEAL

**MAKING A
DIFFERENCE**



Supporting your masonic charity

Follow us on social media:
#2029FESTIVAL



A foreword from

RW Bro Philip Graham Marshall

Provincial Grand Master



English Freemasonry is rightly proud of its long held reputation for making a difference to those who are in need through its charitable giving which over many, many years has supported a tremendous number of worthy causes.

The Province of Nottinghamshire through its Brethren, their families and friends has contributed hugely to the achievements of Freemasonry in providing financial and other assistance to many local and national charities as well as supporting appeals to international incidents needing help.

There is no doubt that much of what has been achieved by Freemasonry has been as a result of the close connection between Freemasons and its own charity, the

Masonic Charitable Foundation (MCF). In the difficult economic times we are all experiencing, the MCF represents that solid, reliable entity working within Freemasonry which provides support for Brethren and their immediate families. The Foundation's remit extends to the promotion of independent living and the offer of advice and guidance to members who are suffering challenging times.

It is estimated that over the last decade the Brethren of Nottinghamshire have received over £2million in direct financial aid from the MCF and former Masonic Charities, and this does not include the cost of professional assistance or guidance from the health care sector paid for by the Foundation. It is therefore with the knowledge that the MCF is there for all of us in many ways, that I will have the pleasure of formally launching the 2029 Appeal at the Annual Meeting of the Province in May this year.

For the Appeal to be successful, it will require the support of the Province as a whole and as charity sits at the core of the practice of Freemasonry, I look to every Brother and Lodge to contribute. Of course, I recognise that not everyone is in a position to make significant donations and therefore we look to those who can go above and beyond in terms of fundraising to use their creative skills to add to the contributions from Brethren and their families. No doubt there will be opportunities to participate in a range of both challenging and enjoyable activities which as well as providing fun, will also put monies into the coffers.

Nottinghamshire Freemasonry has an outstanding record as a charity fundraiser and the Province still sits in first position for any Festival Appeal and the highest amount raised per capita for any appeal and I have every confidence that with your support, we will again be very proud of what we have achieved come the summer of 2029."





A message from

**W bro Martin Johnson ProvDepGDC.,
PPGReg**

Festival Chair

As we embark on this journey, the first one on behalf of the combined Charity, we look to the members, for their support through the six years the Province will be in Festival.

I was honoured to be asked by the PGM to lead this Festival. Having been an acting Steward and part of the DC's team for the last six years, I have had the benefit of meeting many of the Brethren in the Province and have experienced first hand the generosity of the Members. This will be a tough journey through to the end of the Festival with the current unsteady economic climate and reduced membership compared to previous Festivals, but I know in my heart of hearts that the Members of the Nottinghamshire Province will do their level best to help those less fortunate than themselves.

Nottinghamshire Freemasons have an enviable reputation throughout the country for their generosity, having achieved such high per capita totals during previous Festivals. In starting this Festival we hope to retain that reputation.



At the Provincial Annual General Meeting on 5 May 2023, the Right Worshipful Provincial Grand Master will launch the 2029 Festival to raise funds for the Masonic Charitable Foundation.

When you were initiated into Freemasonry you were asked "have you anything to give in the cause of charity" this Festival will enable us all to embrace that virtue, but we also need to be aware that it should be "without detriment to ourselves or connections".

These uncertain economic times will make this Festival challenging, but we as Freemasons have a long history of not looking for the easy way, we always look for the right way to conduct ourselves. Charitable giving is in the DNA of every Freemason and we hope that this Festival will enhance our enjoyment, not diminish it.

The MCF distributed £38.5 Million pounds last year to worthy recipients, from early years, medical research, later life, hospices and charitable grants to name but a few. There is also an increased direction towards the mental health and welfare of the fraternity and the wider community. Without Festival support none of this would be possible.

This Festival should not just be founded on the generosity of the brethren alone it should be used as a mechanism to make sure that every brother is in good order. If by our closer contact and communication we discover only one brother in need it will be deemed a success, especially if we can make his life more comfortable.

The best way to donate will be through the Provincial Relief Chest by regular Giving. Those Lodges and Members that already give to a Relief Chest will be able to transfer the funds and continue giving throughout the Festival, then change them back to the Lodge at the end of the Festival. The more members that sign up early the easier and less onerous the task will seem.

We as a Festival team look forward to the support and good humour of the Brethren over the next six years and hope to meet you all at the many events that will be organised to enhance our enjoyment whilst doing good."



Festival Support

Every Freemason, no matter which Orders of Freemasonry he chooses to become a member of, will be familiar with the truth that his charitable contributions will be "Thankfully received and Faithfully applied". This phrase is universally understood by us all and it represents a perfect balance of charity in harmony. Charity can only be applied after it has been received; and charitable contributions will only be freely given if applied to purposes aligned with those of the donor.

With this vision of a balanced approach to charity, it is most encouraging that the Nottinghamshire 2029 Festival will be centred around the individual membership of the Craft.

For those of us who enhance the enjoyment of our Freemasonry through membership of Orders in addition to the Craft, we are fully committed to supporting our Provincial Grand Master and the whole of the Nottinghamshire Family of Freemasons in this latest Festival Appeal.

On behalf of the Nottinghamshire members of the Mark Degree, Rose Croix, Knights Templar and the Red Cross of Constantine, we will contribute wholeheartedly and give freely to this Festival, so that the MCF may better be enabled to achieve harmony through our charitable support in delivering relief to those in need.

In the spirit of collaboration, our four Orders will work together and contribute collectively in support of the 2029 Festival Appeal. We all look forward to enjoying the friendship and happiness that working together for a common worthy cause will bring, ultimately celebrating the generosity of Nottinghamshire Freemasons.



Message of support from the Royal Arch



In recognition of the undeniable and intrinsic link between the Craft and the Royal Arch, on behalf of all Companions of Nottinghamshire, I pledge support to the Provincial Grand Master and Provincial Grand Lodge in achieving a successful Festival.

The excellent, wide ranging and ever-changing help and support provided by the Masonic Charitable Foundation is much appreciated. The Festival will not only secure funding that generates most of the donations made by the MCF but also, hopefully, increase awareness of the Charity's work."

Julian Townsend
Grand Superintendent



Why should I support the Nottinghamshire 2029 Festival Appeal?

The MCF is your charity

Freemasonry has a long and proud history of charitable giving, which continues today through the work of the MCF.

The MCF builds better lives by encouraging opportunity, promoting independence and improving wellbeing for Freemasons, their families and the wider community.

The MCF relies on the Masonic community to identify those in need and to provide the generous donations that fund their entire work.

Every year the MCF supports

5,000 members of the masonic community at a cost of over **£15 million**

Hundreds of charities with grants totalling **£5.5 million**



By donating to the MCF you could...

- Help families make ends meet when times get tough
- Give greater independence to people with disabilities
- Give young people the opportunity to succeed in their education
- Provide high-quality care for older, disabled or seriously ill people
- Fund life-saving and life-changing medical treatment
- Tackle social isolation and loneliness
- Advance ground-breaking medical research



Support in Nottinghamshire

OVER THE PAST YEAR*
THE MCF HAS GIVEN

78 GRANTS TO SUPPORT THE MASONIC COMMUNITY
TOTALLING **£204,601**

6 LOCAL CHARITIES RECEIVED SUPPORT, WITH GRANTS
TOTALLING **£18,065**

THE 2018 NOTTINGHAMSHIRE FESTIVAL APPEAL RAISED

£2,645,907 FOR THE

Royal Masonic Trust for Girls and Boys

WHICH PROVIDED SUPPORT TO CHILDREN AND YOUNG PEOPLE.

* financial year 2021/22

In September 2021, Worksop College were delighted to welcome their first transformational bursary student, Max Barker. Max joined on a fully-funded place for the entirety of his education, thanks to the unwavering support of the Freemason community.



Max also showed great talent as an aspiring cricketer and was selected to join the college's scholarship programme, which looks to develop and nurture talent further.

Max's place was largely funded through the MCF, with additional support from the Provincial Grand Lodge of Nottinghamshire, as well as the Old Worksopian Lodge, the member lodge closely connected to the college.

Development Manager at Worksop College, Lucy Smithson, heads up the Transformational Bursary programme; "Transformational bursaries such as these are life-changing and in the case of Max has been just that. After losing his Father in June 2019, Max struggled with the trauma of the situation and was left feeling lost and unsupported in his local state school. Max's late Father was an active member of Crowle Lodge, with his Father and Great Grandfather also Masons in the region. The connection with the Masonic community, coupled with his flair for cricket offered some real scope to look at finding a way of supporting Max and offering him a supportive and nurturing environment that would help him not only progress as a cricketer, but give him the confidence, strength and resilience to develop as an individual; an ethos that runs through the core of the college and aligns very much with the values held by the Freemason community. I am passionate about

transforming young lives and cherish the relationship we have established with the wider Freemason community which has enabled this opportunity.

Max's Mother, Kerrie Barker, echoes the impact this opportunity has had on her son; "Max was attending his local comprehensive school when he was offered a part scholarship in cricket at Worksop College. That, along with the help from the MCF and Nottinghamshire Freemasonry, has seen him develop into a very different person. His love of learning has been restored and his grades and effort are consistently improving.



The support from the school has been incredible, and the young man he is today is an example of that. He is becoming a strong, caring and independent young man whose morals, values and integrity reflect that of the school and home life partnership.

His involvement with cricket and the support he has received has helped him to become a strong young cricketer, as well as being a constant first team player of the school's hockey team. He has embraced all the opportunities the college has to offer, from the Dorm Run to House Song!

Without this incredible opportunity, Max would have continued to struggle in the school he used to attend. "We will be forever grateful for this opportunity and experience that the MCF have facilitated."

Max's cricket coach, Karanjit Bansal, knows first-hand the impact such an opportunity can have. "As a former cricket scholar and bursary recipient at Worksop College, I know how much of an impact this opportunity can have on a young life. I have seen a huge amount of growth in Max over the last 18 months; Worksop College has helped him to mature a great deal and learn responsibility, which has been fantastic to see. His cricket skills are continuing to improve as he becomes a stronger player and most importantly, he is enjoying the journey. I look forward to continuing to watch him flourish in a sport that he loves."



When Gus was 17 years old, his father died suddenly, leaving behind Gus, his mother and two sisters.



My family heard of the MCF through my grandma. We got in touch, and they gave me a grant for educational expenses, which helped massively because my mother was a single mother, and it was often difficult for her to afford the things I needed and to help me out as much as she wanted to. The MCF also gave me a laptop with a lot of accessories, which at university is essential."



"In my last year of university, I realised that I really wanted to become a teacher. To get onto a teacher training course, I had to work as a teacher, not being paid. The MCF once again stepped up and gave me a grant to help me through that year.

"I'm a PE teacher now, and I absolutely love what I do. I would really recommend anyone facing hard times to contact the MCF. They can help in so many different ways."

When Margaret developed a problem with her wrist, she found herself facing a huge NHS waiting list, so she turned to us for help.



I had four operations cancelled in a year – every time I was given a date for the surgery, it was cancelled. I eventually had emergency surgery, but it failed, and this was the start of a series of unsuccessful operations.



"I was finding it hard to get on with everyday life, so my husband Ray suggested I ask the MCF for help. Our Almoner came round and sat us down, and together we filled out an application – job done!

"The MCF provided me with funding for another operation, and thankfully things are looking good so far. In fact, I hope to start driving again soon – good news for Ray, since he doesn't drive so I am his chauffeur! The MCF have really come up trumps and I am massively grateful for all of their help."

When Mark's wife, Jacqui, was involved in a car accident which left her with serious brain injuries, their lives and the lives of their two daughters, Ella and Grace were changed forever.



“I'm not someone who would usually ask for help, but when I finally contacted my Lodge Almoner, he was already waiting for me. I told him what had happened, and that my family were now facing severe financial difficulties as a result. We put together an application, and the MCF soon came back with a grant to help me cover the cost of our bills.

“Now, we receive costs towards our travel so that we are able to visit Jacqui regularly. We go every week, and it's particularly important for the girls. Visiting will always be an emotional struggle, but I have got good friends to support me and my family.

“The support from the MCF has been ten out of ten, there is no shadow of a doubt. I feel like they've got my back and my daughters' backs. It's not just the money, it's the sense of family.”

After a premature birth, Ted developed cerebral palsy and his mobility is severely affected. His mother, Sally, turned to the MCF for help with Ted's walking.



“I got in touch with the MCF, and they helped us fund an Upsee mobility harness, which allows for assisted walking. This means Ted is able to enjoy the great outdoors!

“Now, Ted is able to do so much more than he could before. He can join in with his brother when they run around the garden, and loves chasing Alex around their grandparents' house!

“The boys love holding hands with each other and cuddling – it's moments like these that make having twins really special. The MCF's support has really given Ted a sense of independence, which is really important for a growing child. We are all so thankful.”

me&dee Charity helps to support families and children who are facing life changing and limiting circumstances, with holiday's and respite breaks in their lodge at Sherwood Hideaway Nottinghamshire.

Maria Hanson MBE registered me&dee as a charity in July 2006. “We are unique in that our criteria is for anyone, of any age with any life threatening, shortening and terminal condition. This means we receive applications for many terminal and rare conditions and we support not just the very poorly adult or child but the whole family, allowing them to share special memories when their time together is filled with separation due to hospital visits and treatment, as well as stress and worry. We also work in a very personal way, no tick boxes, no bureaucracy and this also makes me&dee very popular to nominate as a charity. Our numbers of those helped rose last year from 100 to 300 all administered by our small team of three.”

Maria always wants to go the extra mile to help more families, so in 2022 she applied to the Masonic Charitable Foundation and was successful in securing a Matched Funded Grant. These additional funds allowed a further 30 families to spend precious time together with a much needed holiday.

Maria also used her connections with the Nottinghamshire Freemasons to get a constant and consistent supply of bears from Teddies for Loving Care. “We have been able to add a bear to all of our comfort packs given to very poorly children. This is not an expense that we could ordinarily cover”. For many families who use Nottingham QMC children's wards, and for many who can only manage one day out this is invaluable. “We concentrate on the smiles and memories we create. We are so very grateful to the Masonic Charitable Foundation for its financial support and the many families we have been able to help that we wouldn't have otherwise be able to. We must also thank all the Freemasons of Nottinghamshire for their kind support.”



Sharewear Clothing Scheme

Sharewear Clothing Scheme is a small Registered Charity based in Nottingham which tackles the hidden issue of clothing poverty. We have seen a huge surge in demand for our help with the ongoing effects of the Covid pandemic and cost of living crisis. We have enabled over 28,000 people to access their #RighttoClothing in 2022, and even more remarkably this has been achieved with a vastly reduced volunteer team.

After having such a tough and testing time in 2022 we were delighted to be nominated by Nottinghamshire Freemasons to receive help and support from the Cranfield Trust which would be fully funded by the Masonic Charitable Foundation (MCF). We were thrilled when we heard from the MCF that we had been selected to receive the award. The support and expertise of professional mentorship offered by the Cranfield Trust, will enable our CEO and Board of Trustees to benefit from management consultancy on prioritising emerging income streams and marketisation of them.



The considerable investment that Nottinghamshire Freemasons and the MCF are undertaking would be out of reach financially to a small charity like ourselves and this level of support will be absolutely invaluable as we look to grow and expand our future services, which also includes continuing to provide employability skills and employment opportunities to our volunteers.

The entire team at Sharewear Clothing Scheme are incredibly grateful to the MCF as we ensure we are supported to facilitate a robust and strategic approach to continue to expand our operations and support many more families across the East Midlands and UK in desperate need of clothing under the guidance and benefit of our partnership with Cranfield Trust.”

Sarah Sinclair,
Trustee, Sharewear Clothing Scheme

Louise Cooke,
CEO, Sharewear Clothing Scheme



How can I get involved with the Nottinghamshire Festival Appeal?

- 1 Donate**
- 2 Fundraise**
- 3 Spread the word**

By taking these three easy steps, you can make a huge difference to the Nottinghamshire 2029 Festival Appeal and the people we support:

1 Donate

There are lots of different ways you can donate to the Nottinghamshire 2029 Festival Appeal, whether it's a one-off donation or a long-term commitment.


Donate online

Make a single donation or set up a regular donation:

 mcf.org.uk/Nottinghamshire2029

Donate over the phone

To set up a regular donation:

 **020 3146 3345**

To make a single donation by debit or credit card:

 **020 3146 3346**

Use Gift Aid envelopes


The MCF can supply Gift Aid envelopes for alms collections, festive boards and other occasions; use of the envelopes will boost eligible donations by 25 per cent.

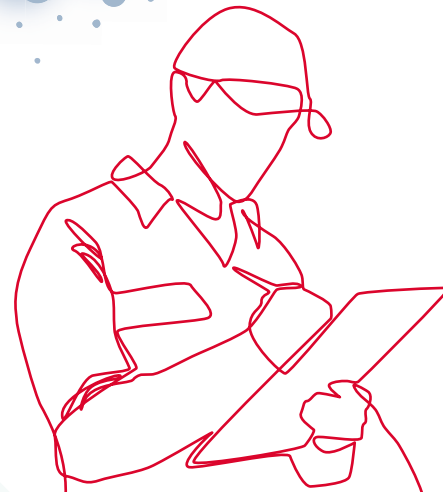
Envelopes can be obtained by contacting your Lodge Charity Steward.

Get in touch

For further guidance on how to donate, get in touch with the Relief Chest team:

 reliefchest@mcf.org.uk

 020 3146 3352



Use paper forms

You can complete the form at the back of this booklet, or download the donation form that's right for you from the MCF website:

 mcf.org.uk/Nottinghamshire2029

Completed forms and Gift Aid envelopes should be returned to:

 **Relief Chest Scheme**
Masonic Charitable Foundation,
60 Great Queen Street, London
WC2B 5AZ

Donate using a QR code

Scan this QR code with your phone to make a donation

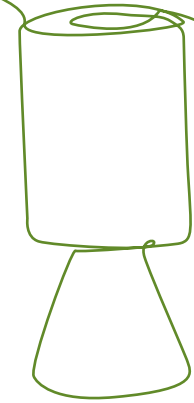


2 Fundraise

Social or sponsored events will raise vital funds for the Festival and it is important that each lodge gives careful consideration to planning and holding one or more events each year.

Make it fun

There are many ways of taking part to raise money. You could arrange a quiz night or special dinner, take part in a daring challenge or sign up for a sponsored event – whatever you do, make it fun!



Make it easy

Setting up an online fundraising page takes just a few minutes and is an easy way for your friends and family to sponsor you. All the donations will go directly into the Festival Relief Chest, saving you time and helping you focus on your fundraising.

Sharing your page through social media or email is a great way to build momentum and keep your friends up to date.

Visit the MCF website to create your own online fundraising page:

 mcf.org.uk/Nottinghamshire2029

The MCF's sponsorship and Gift Aid forms make it easy to collect donations both in person and online.

Visit the MCF website and download the donation forms you need to start fundraising:

 mcf.org.uk/Nottinghamshire2029

 020 3146 3333



giftaid it

Make it worth more

If you are a UK taxpayer, the MCF can reclaim an extra 25p for every £1 you give. It won't cost you any extra – all you have to do is make a Gift Aid declaration.

You can find out more about Gift Aid on the Relief Chest Scheme resources page:

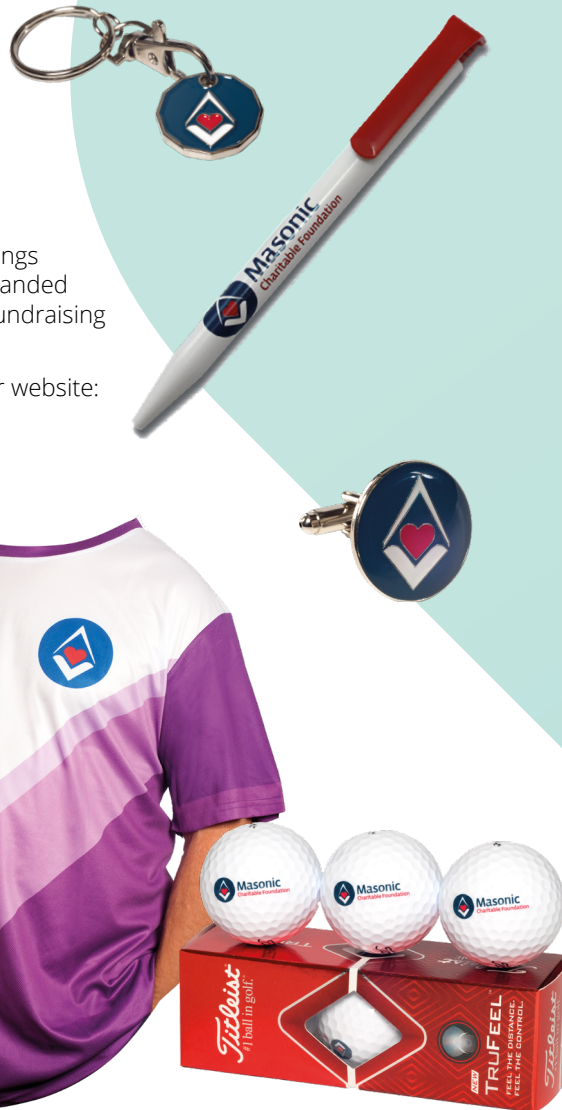
 mcf.org.uk/reliefchest/resources

Make it MCF

From running tops and water bottles, to keyrings and coasters, the MCF has a wide range of branded merchandise that will help you to get in the fundraising spirit and spread the word.

You can order your merchandise through our website:

 mcf.org.uk/resources/merchandise



3 Spread the word!

The 2029 Festival Appeal is not just a chance to raise vital funds for the MCF; it is also an opportunity to educate every member in Nottinghamshire about the support available and the work carried out in your area, so that if anyone ever finds themselves in need, they know that they can approach the MCF.

To find out more about the MCF's impact in your area visit:

 mcf.org.uk/impact/our-work-in-your-community/

Get online

Keep up to date with all the latest MCF news by subscribing to their newsletter or following them on social media. Comment on stories and share them with friends and family to spread the word.

 mcf.org.uk/sign-up

 [@themcf](https://www.facebook.com/themcf)

 [@Masonic_Charity](https://twitter.com/Masonic_Charity)

 [@masonic_charity](https://www.instagram.com/masonic_charity)

 [/MasonicCharitableFoundation](https://www.youtube.com/MasonicCharitableFoundation)



The Direct Debit Guarantee

- This Guarantee is offered by all banks and building societies that accept instructions to pay Direct Debits.
- If there are any changes to the amount, date or frequency of your Direct Debit The Grand Charity of the United Grand Lodge of England will notify you ten working days in advance of your account being debited or as otherwise agreed. If you request The Grand Charity of the United Grand Lodge of England to collect a payment, confirmation of the amount and date will be given to you at the time of the request.
- If an error is made in the payment of your Direct Debit by The Grand Charity of the United Grand Lodge of England or your bank or building society, you are entitled to a full and immediate refund of the amount paid from your bank or building society. If you receive a refund you are not entitled to, you must pay it back when The Grand Charity of the United Grand Lodge of England asks you to.
- You can cancel a Direct Debit at any time by simply contacting your bank or building society. Written confirmation may be required. Please also notify us.

Support for Freemasons and their families

The MCF can provide a wide range of help and support for financial, health, family and care-related needs including:

Daily living costs

- Household arrears
- Support for rent and security deposit
- Emergency household repairs
- Boiler replacement
- White goods and furnishings
- Funeral costs
- Childcare costs

Health, care and wellbeing

- Initial consultations
- Investigative tests and scans
- Surgery
- Physiotherapy
- Manual therapy
- Speech therapy
- Occupational therapy assessments
- Mobility equipment
- Home adaptations
- Motability vehicle support
- Dental work
- Mental health support
- Short breaks for carers


Children, young people and education

- Computer equipment
- Educational assessments
- School fees – in exceptional circumstances
- Higher education
- Apprenticeships
- Childcare costs
- Support for exceptional talent

The above are not exhaustive lists of support available, and all support is considered on a case-by-case basis.

Can the MCF help you?

For advice about the support available, eligibility and how to apply, speak to your lodge Almoner or contact the MCF enquiries team today:

 **0800 035 60 90**

 **help@mcf.org.uk**

 **mcf.org.uk**

Martin Johnson, Director
martin@harryrichmond.co.uk

Jim Crossley, Secretary
jimcrossley500@gmail.com

Roy Goldsbrough, Finance
roy@goldsbrough.co.uk

Bob Wyatt, MCF Link
bobwyatt@sky.com

Kevin Hyland, Charity
k.hyland@me.com

James Hague, Byron Club
jameshague89@icloud.com

Oliver Rainbow, Comms
oliverrainbow@gmail.com

Paul Simpson, Events
paul92.simpson@outlook.com

Andy O'Hagan, Logistics
andyohagan434@btinternet.com



Relief Chest Scheme Masonic Charitable Foundation, 60 Great Queen Street London WC2B 5AZ
Telephone: 020 3146 3352 Email: reliefchest@mcf.org.uk Web: www.mcf.org.uk/reliefchest



Regular & Single Donation Form

Relief Chest No: FEST2029

Nottinghamshire 2029 Festival



For Freemasons, for families, for everyone

Important Notes

1. This form contains a Single/Regular Donation, Gift Aid Declaration a Direct Debit Mandate and Guarantee. Please complete the relevant parts and pass it to your Relief Chest Representative.
2. All donations for the Relief Chest under a Regular Donation have to be made by Direct Debit from a Bank or Building Society account in the United Kingdom. Bank Standing orders, cash and cheques cannot be accepted for a Regular Donation. The charity is authorised to collect only the fixed amount specified on your form. The charity guarantees that it will make no other collections. Should it do so in error, a full and immediate refund will be made. To allow for both the charity and your Bank to process Direct Debits, this form must be received in the Relief Chest Scheme Office at least two months before the first payment is due.
3. You must complete a separate form for each Relief Chest if you wish to support more than one.
4. Please notify us if you change your name, address or Bank/Building Society details.
5. Tax cannot be reclaimed unless the relevant box(es) of the Gift Aid Declaration overleaf are ticked.
6. If you pay Income Tax at the higher or additional rate and want to receive the additional tax relief due to you, you must include all your Gift Aid donations on your Self-Assessment tax return or ask HM Revenue and Customs to adjust your tax code.
For further information on Gift Aid, please visit www.hmrc.gov.uk

Why not increase your donation by letting us reclaim your tax?

If you Gift Aid your donation, we can reclaim 25p of tax on every £1 you give.

giftaid it

Oral Gift Aid Declaration

For use by Relief Chest Representative only.

If the donor has completed this form overleaf please leave this section blank. If you have been unable to obtain the donor's signature you can ask them if they are willing to make a Gift Aid Declaration and then tell us if they agree. We do not require the donor's signature. We will simply confirm the details to the donor in writing. Please fill in the donor's full name and address, post code and Lodge/Chest information on the other side of this form and sign the declaration below.

I confirm that the person named overleaf told me on _____ (date) that he/she wished all qualifying donations made to the Relief Chest Scheme (The Grand Charity Registered Charity Number 281942) in the last four years and all donations made in the future to be treated as Gift Aid until otherwise notified. If a valid Gift Aid Declaration from this donor is not already held, The Relief Chest office will confirm in writing to him/her.

Data Protection Act 2018 and the UK GDPR (General Data Protection Regulation) - Privacy Notice

The Relief Chest Scheme is committed to protecting your personal information. The scheme is fully compliant with DPA and UK GDPR legislation when handling your personal data. Our legal basis for collecting, processing and sharing personal information as set out in our Privacy Policy is based on the legitimate interest of the Relief Chest Scheme.

To find out more about how we handle, share and store your personal information and how to amend or request a copy of any personal information we hold about you, please visit <https://mcf.org.uk/policies/privacy/relief-chest-privacy-policy/>

Signature _____

Date _____



Masonic
Charitable Foundation



Registered with
**FUNDRAISING
REGULATOR**

Building better lives

60 Great Queen Street | London | WC2B 5AZ

Tel: 020 3146 3333 | info@mcf.org.uk

mcf.org.uk

Charity number 1164703. Company number 09751836.

Keep up to date with all the latest
Nottinghamshire 2029 Festival Appeal news:



nottinghamshiremasons.co.uk



@nottinghamshiremasons



@NottsMasons



@nottinghamshiremasons

